

Waterborne Polyurethane Formulation for Interior High Gloss Topcoats

with Borch[®] Performance Additives

Enabling high performance properties in wood-flooring and cabinetry coatings

- ✓ Low VOC
- ✓ NMP Free
- High Hardness
- High Gloss
- Robust Chemical Resistance
- Improved Solvent Rub
- Excellent Abrasion Resistance



Interior Topcoat Formulation for Wood Flooring and Cabinetry			
Material	Function	Supplier	Formulation
UROTUF [®] L63-W-38	Resin	Polynt-Reichhold	82.71
Ethyl Carbitol	Coalescent	Sigma-Aldrich	8.07
Mix Three Materials Below Before Adding			
Borch[®] Gel 0625	Rheology Modifier	Milliken	0.22
Ethyl Carbitol	Coalescent	Sigma-Aldrich	0.33
Water	Solvent	N/A	0.33
Borch[®] Gol LA 200	Flow/Leveling/Defoamer	Milliken	0.09
Borch[®] Gol LA 50	Substrate Wetting	Milliken	0.12
Surfynol 104E	Surfactant	Evonik	0.05
Water	Solvent	N/A	8.08
		Total	100.00

Borch[®] Performance Additives

- **Borch[®] Gel 0625:** VOC-free and APEO-free medium shear range HEUR thickener
- **Borch[®] Gol LA 200:** VOC-free, 100% active air release agent with flow and leveling properties
- **Borch[®] Gol LA 50:** Substrate wetting additive with flow and leveling properties

Great Overall Solvent Rub Performance

200 Solvent Double Rubs

MEK



Xylene



IPA

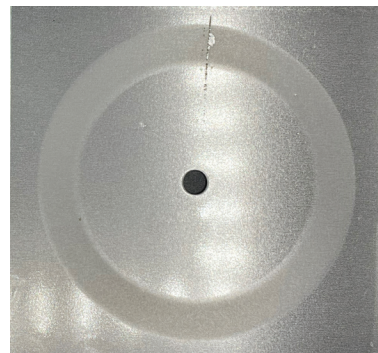


Ethanol



150um wire bar, B1000 panels, conditioned 7 days at 25°C, 50%RH
Improved performance compared to market standard formulations

Excellent Abrasion Resistance



Taber, CS-17 wheel, 1 kg load, 1000 cycles

Waterborne Polyurethane Formulation for Interior High Gloss Topcoats

with Borch® Performance Additives

Film Performance

Dry Time, hrs:min ¹		Film Color ²	
Set to Touch	0:13	L*	92.86
Tack Free	0:20	a*	-0.59
Through Dry	0:40	b*	4.73
Gloss ¹		König Hardness ¹	146.5
60°	84	Taber Abrasion, mg loss ³	16.1
20°	94		

¹ 3 mil bird bar over glass

² 3 mil bird bar over leneta chart

³ Taber, CS 17 wheel 1 kg load, 1000 cycles

Chemical Resistance

10% Acetic Acid	2	Lipstick	5
10% Ammonia	5	Mustard	3
Parson's Ammonia	5	Nail Polish Remover	2
Ball Point Ink	5	Olive Oil	5
Black Marker	1	Shoe Polish	5
Bug Spray	1	10% Sodium Hydroxide	5
Cleaner 409	5	1% Spic and Span	5
Coffee	5	10% Sulfuric Acid	5
Dye	3	Sunblock, SPF-50	3
50% Ethanol	1	Tea	5
Fantastic	5	Vinegar	3
Iodine	2	Water	5
Ketchup	5	Windex	5

ASTM D1308, 4-hour exposure, covered rating 0-5 no effect



Order your sample at:
www.borchers.com/contact

PLEASE NOTE: As each customer's use of our product may be different, information we provide, including without limitation, recommendations, test results, samples, care/labeling/processing instructions or marketing advice, is provided in good faith but without warranty and without accepting any responsibility/liability. Each customer must test and be responsible for its own specific use, further processing, labeling, marketing, etc. All sales are exclusively subject to our standard terms of sale posted at www.milliken.com/terms (all additional/different terms are rejected) unless explicitly agreed otherwise in a signed writing. Borch® is a trademark of Borchers GmbH. Synolac is a registered trademark of Arkema Coating Resins.

Milliken™