

# Water-Reducible High Gloss Alkyd Formulation for General Industrial Use

with Borch<sup>®</sup> Performance Additives


 HAPS-free

High-performance formulation for improved adhesion, corrosion resistance, and reverse impact compared to benchmark formulations


General Industrial Paint Formula			
Material	Function	Supplier	Formulation (Weight)
Deionized Water	Solvent	N/A	5.05
<b>Borch<sup>®</sup> Burst DF 300</b>	<b>Defoamer</b>	<b>Milliken</b>	<b>0.11</b>
<b>Borch<sup>®</sup> Gen 1252</b>	<b>Dispersant</b>	<b>Milliken</b>	<b>0.60</b>
Kronos 2310	Titanium Dioxide	Kronos	20.92
High speed disperse to 7+ Hegman			
Charge to letdown tank			
Polychem 7775-EB-70	Resin	OPC Polymers	27.89
Butyl Cellosolve	Solvent	DOW	1.49
Triethylamine	Amine	Sigma-Aldrich	1.34
Deionized Water	Solvent	N/A	41.17
Add grind paste to letdown			
Premix next four items, then add slowly, incompatibility will occur if not premixed			
Butyl Cellosolve	Solvent	DOW	0.75
<b>10% Cobalt Hydro-Cure<sup>®</sup> IV</b>	<b>Drier</b>	<b>Milliken</b>	<b>0.15</b>
<b>5% Calcium Hydro-Cem<sup>®</sup></b>	<b>Drier</b>	<b>Milliken</b>	<b>0.29</b>
<b>12% Zirconium Hydro-Cem<sup>®</sup></b>	<b>Drier</b>	<b>Milliken</b>	<b>0.24</b>
<b>Total</b>			<b>100.00</b>

## Borch<sup>®</sup> Performance Additives

### Borch<sup>®</sup> Burst DF 300:

-  VOC- and silicone-free
- Foam control agent and defoamer

### Borch<sup>®</sup> Gen 1252:

-  100% active, VOC- and APEO-free
- Wetting and dispersing agent

## Formula Specifications

- **Lb/gal:** 10.05
- **VOC (g/L):** 336
- **Viscosity:** 64 ± 3 KU
- **PVC:** 22.07%
- **NVV:** 27.27%
- **pH:** 8.3-8.8



# Water-Reducible High Gloss Alkyd Formulation for General Industrial Use

with Borchi® Performance Additives

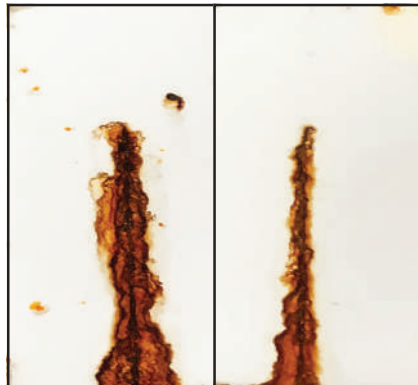
HAPS-free

## Improved Corrosion Resistance

ASTM B117 Q-Fog Salt Spray

**Benchmark Formula**

**Optimized Formula**



6 mil WFT, R-36 Cold Rolled Steel Panel, 7-day cure, 336 hours, 3" Line Scribe

## Optimized Adhesion

**Scotch 600 Tape**

**Permacel Tape**



ASTMD 3359 Class: 5B

ASTMD 3359 Class: 5B

6 mil WFT, R-36 Cold Rolled Steel Panel, 7-day cure

## Excellent Reverse Impact

**Benchmark Formula**

**Optimized Formula**

144 inch-pounds		
120 inch-pounds		
60 inch-pounds		
20 inch-pounds		
4 inch-pounds		

6 mil WFT, R-36 Cold Rolled Steel Panel, 7-day cure, 4-lb weight

Order your sample at:  
[www.borchers.com/contact](http://www.borchers.com/contact)

PLEASE NOTE: As each customer's use of our product may be different, information we provide, including without limitation, recommendations, test results, samples, care/labeling/processing instructions or marketing advice, is provided in good faith but without warranty and without accepting any responsibility/liability. Each customer must test and be responsible for its own specific use, further processing, labeling, marketing, etc. All sales are exclusively subject to our standard terms of sale posted at [www.milliken.com/terms](http://www.milliken.com/terms) (all additional/different terms are rejected) unless explicitly agreed otherwise in a signed writing. Borchi is a trademark of Borchers Americas.